



9222 KNOLLING LOOP

Ooltewah, TN 37363 | Bainbridge

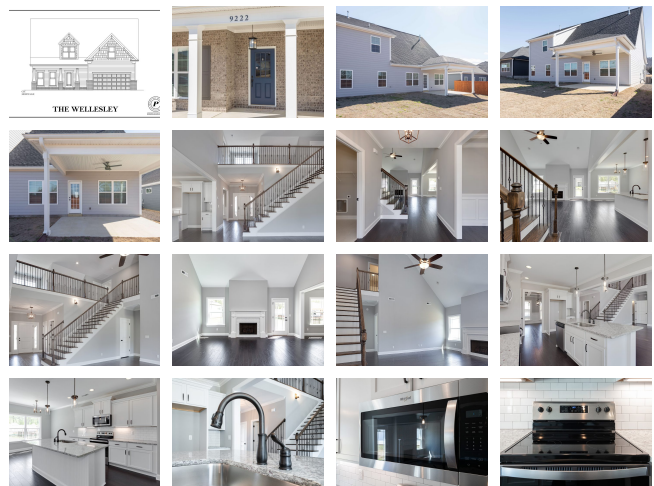
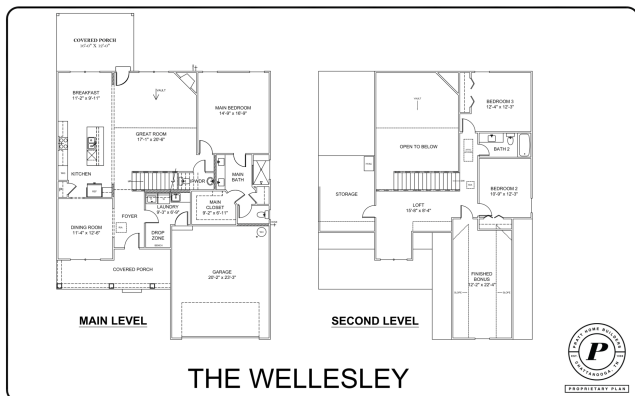
\$499,900

Sq Ft: 2,601 Bedrooms: 3
Baths: 2 Half Baths: 1 Stories: 2

The Wellesley home plan in our latest community, Bainbridge Park, is a masterpiece of thoughtful living that is perfect for families who need the space but don't want to compromise on style! This home design boasts a vaulted great room and a spacious kitchen with a large island, tile backsplash, wall oven and gas cook-top to make every meal a joy to cook. The primary bedroom and bathroom are conveniently located on the ground floor, with an oversized shower featuring a full tile bench. The upper level offers a loft, a bonus room, 2 guest bedrooms and a full bath. Take some time to appreciate the views of White Oak Mountain from the rear covered patio while sipping your coffee in the morning or by the fire at night.

As a resident of Bainbridge Park, you can enjoy community amenities such as a pool, cabana, sidewalks, and stunning greenspaces perfect for a leisurely stroll. Plus, you're just minutes from I-75, Cambridge Square and Hamilton Place, making this community the perfect blend of accessibility and serenity.

- Upstairs Loft and Finished Bonus Room
- Main Bedroom Downstairs
- Large Upstairs Walk In Storage
- Covered Porch



Sales Office
9246 Knolling Loop
Ooltewah, TN 37363

Office Hours

